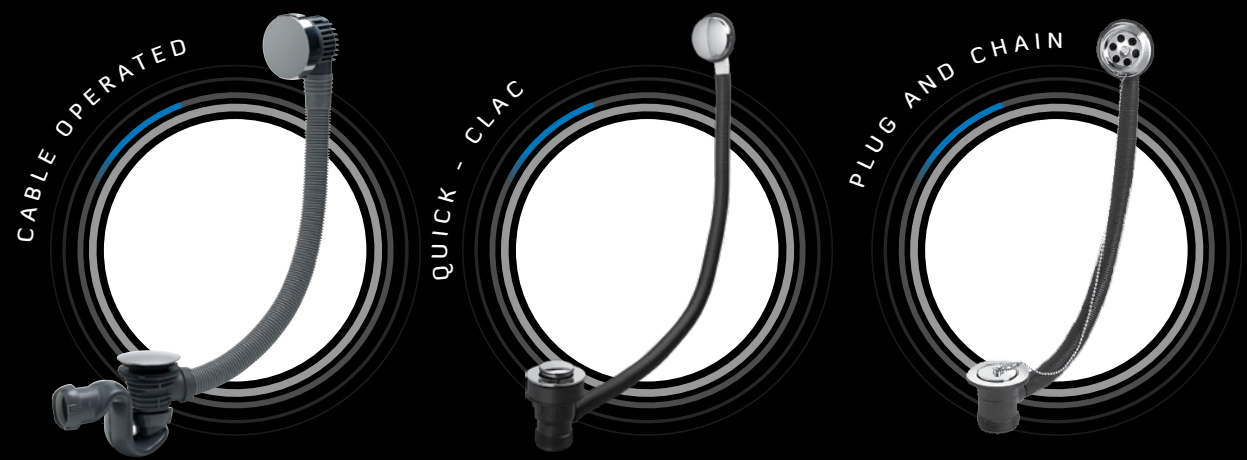


BATH



SB600 + ELTON

CABLE WASTE SB600 + ELTON



- › **CABLE OPENING-CLOSING SYSTEM:** 90° rotation with unique clutch control operation (lifetime guaranteed)
- › **DESIGN OVERFLOW:** Round and square options.
- › **700 MM CABLE LENGTH:** With high resistance stainless steel cable inside the overflow tube to avoid damage during installation.
- › **EASY SET UP:** The self-centering washer retains the waste in position under the bath when the grid is being installed.
- › **SPACE SAVING COBRA TRAP:** Only 108mm under bath.
- › **FASTEST FLOW RATE ON THE MARKET:** 63 L/m
- › **SELF CLEANING TRAP:** Guaranteed not to block.
- › **FLEXIBLE:** 40° movement and rotating trap to aid connection to the waste pipe.
- › **ONLY 2 CONNECTIONS POINTS:** 50% less chance of leak than a traditional 4 joint waste.
- › **DEPTH OF SEAL:** 56mm

**108
mm**



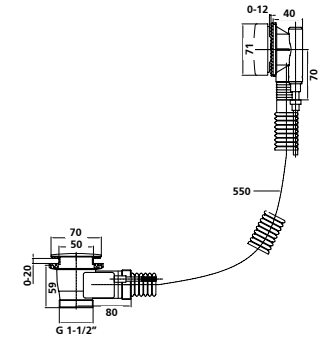
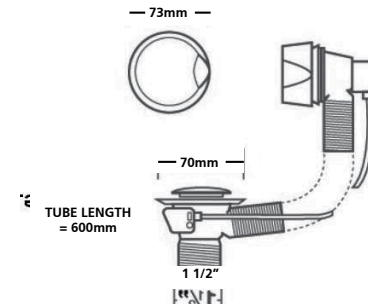
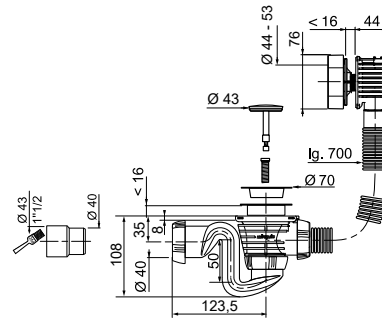
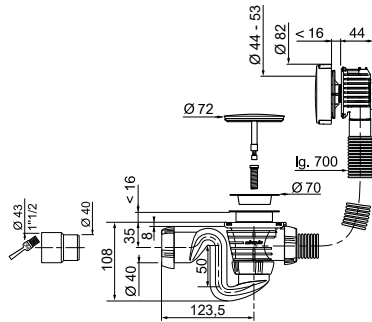
- › * in normal conditions of use

CABLE



| Description | SB600 | ELTON | METAL CHROME PLATED POP UP WASTE | METAL CHROME PLATED POP UP WASTE |
|--------------------|-------------------------------|-------------------------------|----------------------------------|----------------------------------|
| Reference | 34590301 | 30717610 | WHP05CP | 30719934 |
| EAN code | 3375539056215 | 3375537175901 | 5024139080516 | 5017134118995 |
| Packaging | Box | Box | Box | Box |
| Multiple / Pack | 12 per outer / 120 per pallet | 12 per outer / 120 per pallet | 16 per outer / 320 per pallet | 11 per outer / 275 per pallet |
| Overflow length mm | 700 mm | 700 mm | 600 mm | 550 mm |
| Handle | Metal chrome plated | ABS chrome plated | Metal chrome plated | Metal chrome plated |
| Plug | Metal chrome plated | Metal chrome plated | Metal chrome plated | Metal chrome plated |

Technical drawing



QUICK CLAC



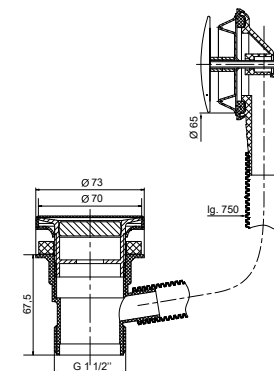
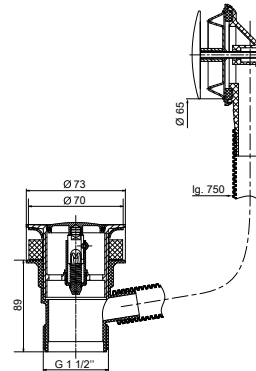
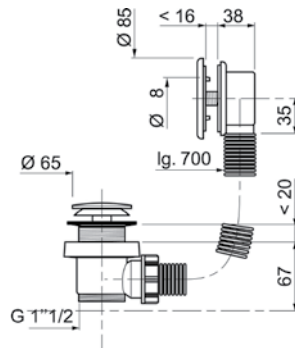
Did you know?
WIRQUIN invented the
 QUICK CLAC solution
 in 1991



ROTARY

| Description | QUICK CLAC WASTE - PLAIN DOME | QUICK CLAC WASTE - CLASSIC PLUG | ROTARY WASTE |
|--------------------|-------------------------------|---------------------------------|-------------------------------|
| Reference | SP760099 | WHO95CP | WHO94CP |
| EAN code | 3375536003953 | 5017134118360 | 5024139033550 |
| Packaging | Bag | Box | Box |
| Multiple / Pack | 12 per outer / 300 per pallet | 24 per outer / 600 per pallet | 24 per outer / 600 per pallet |
| Overflow length mm | 700 mm | 750 mm | 750 mm |
| Handle | ABS Chrome Plated | Metal Chrome Plated | Metal Chrome Plated |
| Plug | Stainless Steel Mushroom Plug | Metal Chrome Plated | Metal Chrome Plated |

Technical drawing

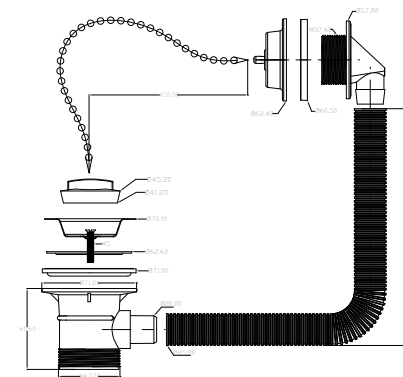
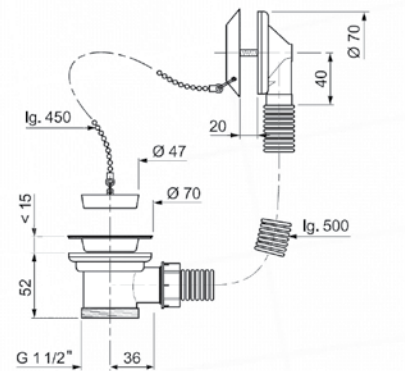


PLUG & CHAIN



| Description | POLY PLUG, 18" CHAIN, PLASTIC BODY | POLY PLUG, 18" CHAIN, PLASTIC BODY |
|--------------------|---------------------------------------|---------------------------------------|
| Reference | SP5500 | WHO7355 |
| EAN code | 3375530114211 | 5024139071743 |
| Packaging | Box | Box |
| Multiple / Pack | 55 per outer / 550 per pallet | 30 per outer / 600 per pallet |
| Overflow length mm | 500 | 455 |
| Plug | Ø47 mm Length chain = 450 mm | Ø45 mm Length chain = 460 mm |

Technical drawing

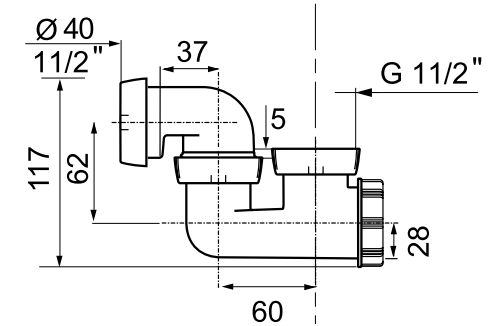
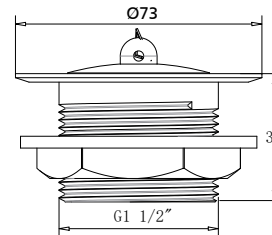
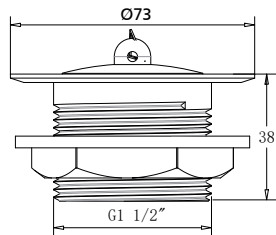


WASTES + TRAPS



| Description | CHROME PLATED BRASS BATH WASTE, POLY PLUG, 18" CHAIN + S HOOK | CHROME PLATED BRASS BATH WASTE, POLY PLUG | SWIVELLING BATH TRAP - 50MM WATER SEAL |
|-----------------|---|---|--|
| Reference | WHK03CP | WH503CP | 30717611 |
| EAN code | 5024139088789 | 5017134119046 | 3375537175918 |
| Packaging | Box | Box | Bag |
| Multiple / Pack | 58 per outer / 2900 per pallet | 58 per outer / 2900 per pallet | 55 per outer / 1100 per pallet |
| Plug | Ø45 mm Length chain = 460 mm | Ø45 mm No chain | - |

Technical drawing





www.wirquin.co.uk

- 
WirquinLtd
- 
WirquinLtd
- 
WirquinLtd
- 
WirquinLtd UK