

**The most hygienic  
WAY TO FLUSH!**

**CONCEALED  
CISTERNS**

**TOUCHLESS  
DUO COMPACT  
CONCEALED CISTERN**



The Wirquin TOUCHLESS DUO COMPACT concealed cistern is an ideal solution for any furniture or in-wall installation thanks to its compact size. The TOUCHLESS flush valve operates without contact thanks to its infrared sensor which detects the slightest movement. TOUCHLESS is the 100% hygienic solution and guarantees effective protection against germs, bacteria and viruses.

## **BENEFITS**



### **100% HYGIENIC**

Touchless infrared detection button.



### **AIR GAP COMPLIANT**

Meets all AG Air Gap requirements.



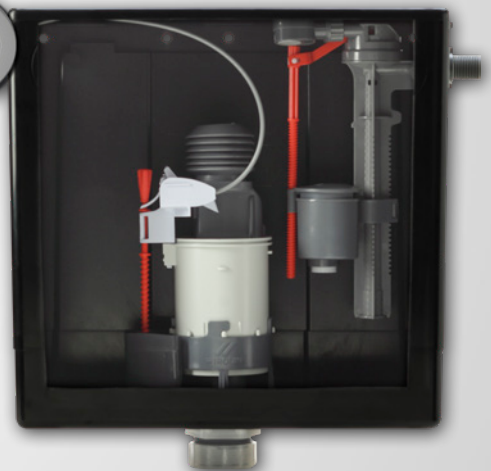
### **MOST COMPACT CISTERN ON THE MARKET**

Ideal for bathroom furniture and in wall installations.



### **PROVEN PERFORMANCE**

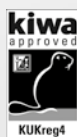
Endurance tested to 200,000 flush cycles.



\*



Fittings only



**wirquin**

# TOUCHLESS DUO COMPACT CONCEALED CISTERN

CISTERNS

100% Hygienic thanks to the touchless infrared detection button.

## CHARACTERISTICS

Outlet: 2"

Flush: Touchless Dual Flush Valve - Cable

The user can control the volume of water being used to flush with a quick hand wave activating the part flush, and a hand held over the button for 4 seconds activating the full flush.

Flush volumes: 6 / 3 Litres

Inlet: Side Entry Jollyfill Air

Access: Top

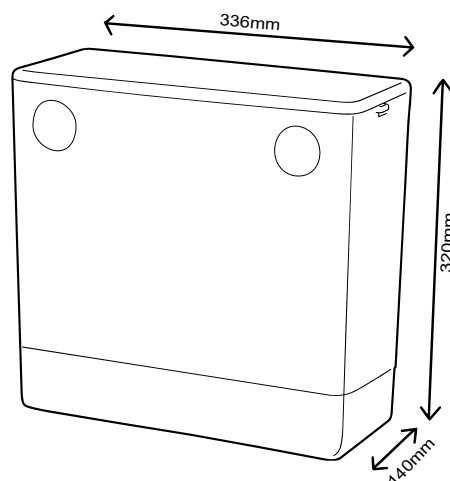
Internal overflow: Yes

Button: Chrome/Black

Activation: Touchless sensor

In the rare occasion of battery failure, the flush can be operated by the manual override. Touchless has a battery lifespan of 40,000 flush cycles. Requires 4 AA alkaline batteries.

Fittings and flushpipe included

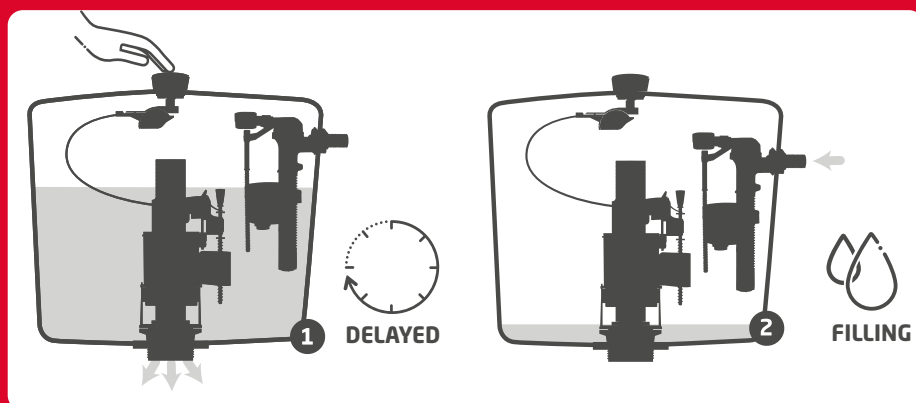


**wirquin**  
Innovation



## DELAYED ACTION FILLING

> The intelligent float makes it possible to fill the tank in an optimum way. Thanks to its delayed action technology, it only releases water into the cistern when the flush cycle is complete.



## SAVE WATER

\* 6L of water saved per day on average for a family of 4 when replacing an old inlet without a delayed action float.

Product name

Duo Compact Touchless Concealed Cistern

Reference

50120590

EAN code

5017134147841

Packaging

BOX

Pallet Qty

1 / 54

[www.wirquin.co.uk](http://www.wirquin.co.uk)

**wirquin**